



HEAVY DUTY RACK MOUNTABLE SLIDING SHELF

Ideal for sliding out heavy components and peripherals for access and easy maintenance

SPACE SAVER

Discover Kendall Howard's versatile Heavy Duty Rack Mountable Sliding Shelves, available in both solid and vented options. These shelves support up to 200 lbs. each, providing a reliable solution for your servers and heavy components. Effortlessly slide your equipment out for quick and easy access, simplifying both setup and maintenance tasks. Choose Kendall Howard for a seamless blend of strength and convenience in your rack solutions.



HEAVY DUTY RACK MOUNTABLE SOLID SLIDING SHELF

Item #1922-3-600-01

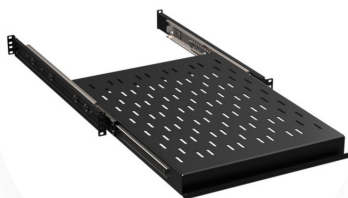


HEAVY DUTY RACK MOUNTABLE VENTED SLIDING SHELF

Item #1922-1-700-01

FEATURES

- 24" shelf depth
- 200 lb. weight capacity
- Mounting depth adjusts from 24" to 36"
- Rounded corners
- 19" EIA compliant
- Easy to install
- Made in the USA
- Limited Lifetime Warranty



Shelf slides out for easy accessibility



10-32 RACK SCREWS
50 PACK

Item #0100-1-001-01

Call 651.213.1333 or email Sales@kendallhoward.com for pricing and availability