

**KENDALL HOWARD CONFIDENTIAL**  
 THE INFORMATION CONTAINED IN THIS DRAWING IS THE SOLE PROPERTY OF KENDALL HOWARD. ANY REPRODUCTION IN PART OR AS A WHOLE WITHOUT THE WRITTEN PERMISSION OF KENDALL HOWARD IS STRICTLY PROHIBITED.

**MANUFACTURING COMMENTS:**

**UNLESS OTHERWISE SPECIFIED, ALL DIMENSIONS ARE IN INCHES.**

TOLERANCES:  
 FRACTIONAL:  $\pm 1/8$   
 ANGULAR:  $\pm 1^\circ$   
 TWO PLACE DECIMAL:  $\pm .03$   
 THREE PLACE DECIMAL:  $\pm .010$   
 HOLE:  $\pm .005$

**MATERIAL:** NA

**SURFACE AREA (in<sup>2</sup>):** NA

**FINISH ID:** NA

**FINISH DESCRIPTION:**  
 NA

DO NOT SCALE DRAWING

**APPROVAL**      **DATE**

DRAWN    BS      10/05/2020

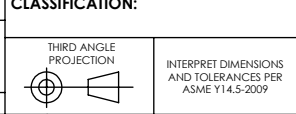
DESIGN

ENG APPR

MFG APPR

LEGACY Part Number:

**CLASSIFICATION:**



**KENDALL HOWARD**

**TITLE:**  
**PRODUCT DATA-**  
**PERFORMANCE PLUS LAN**  
**STATION, 60" WIDE**

SIZE    DWG. NO.      REV

**A** 7100-1-100-60 WP      **B**

SCALE: 1:24    WEIGHT (lbs): 346.294    SHEET 1 OF 1

ECO No:    Description:    By:    Date:    App By:

5

4

3

2

1

A

A