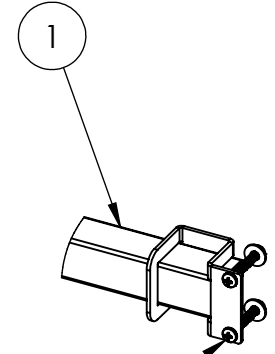
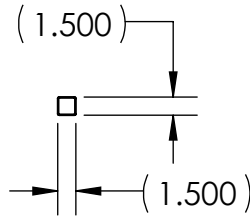
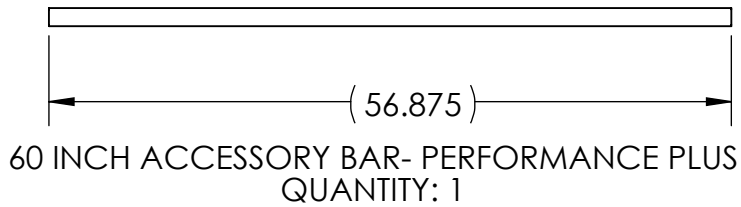
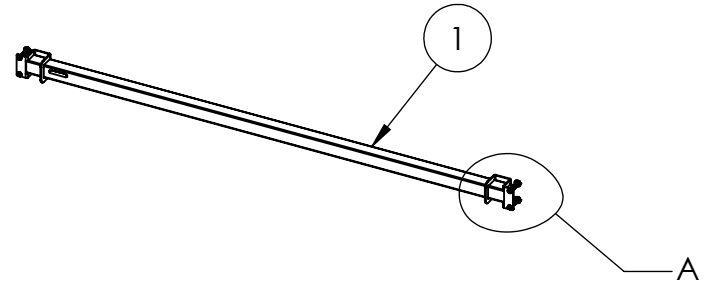
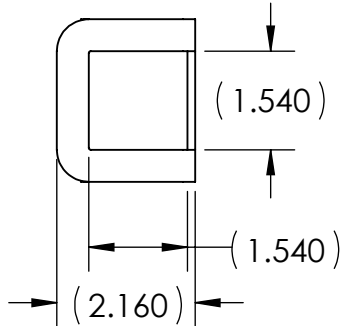
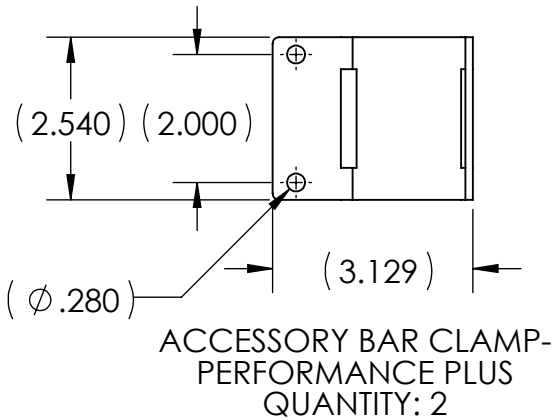
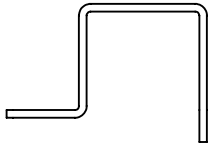


ITEM NO.	PART NUMBER	DESCRIPTION	QTY.
1	7000-3-560-00	60" PERFORMANCE PLUS ACCESSORY BAR KIT	1



1/4-20 HARDWARE SUPPLIED WITH ①

DETAIL A
SCALE 1 : 6
TYP BOTH ENDS



KENDALL HOWARD CONFIDENTIAL
THE INFORMATION CONTAINED IN THIS DRAWING IS THE SOLE PROPERTY OF KENDALL HOWARD. ANY REPRODUCTION IN PART OR AS A WHOLE WITHOUT THE WRITTEN PERMISSION OF KENDALL HOWARD IS STRICTLY PROHIBITED.

MANUFACTURING COMMENTS:

UNLESS OTHERWISE SPECIFIED,
ALL DIMENSIONS ARE IN INCHES.

TOLERANCES:
FRACTIONAL: ±1/8
ANGULAR: ±1°
TWO PLACE DECIMAL: ±.03
THREE PLACE DECIMAL: ±.010
HOLE: ±.005

MATERIAL: NA

SURFACE AREA (in²): NA

FINISH ID: NA
FINISH DESCRIPTION:
NA

DO NOT SCALE DRAWING

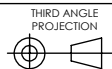
APPROVAL

DATE

DRAWN	BS	09/27/2021
DESIGN	BS	09/28/2021
ENG APPR		
MFG APPR		

LEGACY Part Number:

CLASSIFICATION:
Technical Furniture



INTERPRET DIMENSIONS AND TOLERANCES PER
ASME Y14.5-2009

KENDALL HOWARD

TITLE:
PRODUCT DATA- 60"
PERFORMANCE PLUS
ACCESSORY BAR KIT

SIZE DWG. NO.

A 7000-3-560-00
Product Data

REV

A

SCALE: 1:24 WEIGHT (lbs): 6.39

SHEET 1 OF 1

N/A	Initial Release	BS	09/28/2021	-
ECO No:	Description:	By:	Date:	App By: