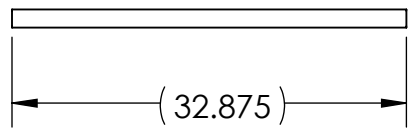
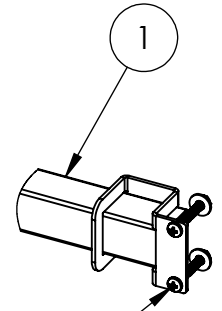
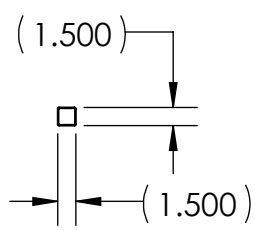


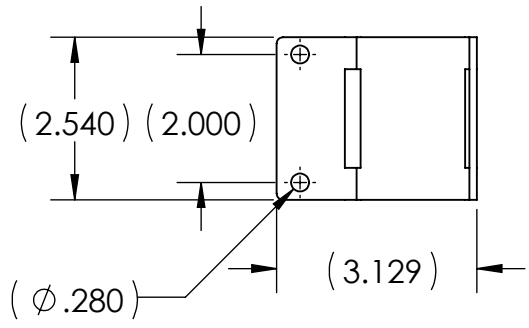
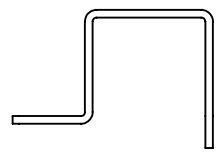
ITEM NO.	PART NUMBER	DESCRIPTION	QTY.
1	7000-3-536-00	36" PERFORMANCE PLUS ACCESSORY BAR KIT	1



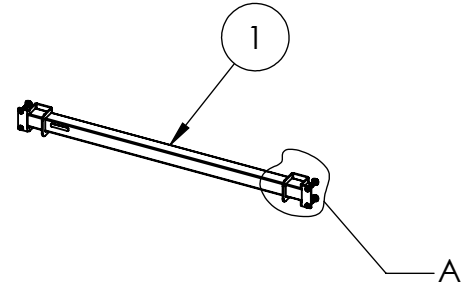
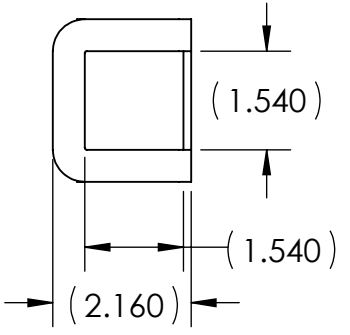
36 INCH ACCESSORY BAR- PERFORMANCE PLUS
QUANTITY: 1



1/4-20 HARDWARE SUPPLIED WITH ①
DETAIL A
SCALE 1 : 6
TYP BOTH ENDS



ACCESSORY BAR CLAMP-
PERFORMANCE PLUS
QUANTITY: 2



KENDALL HOWARD CONFIDENTIAL
THE INFORMATION CONTAINED IN THIS DRAWING IS THE SOLE PROPERTY OF KENDALL HOWARD. ANY REPRODUCTION IN PART OR AS A WHOLE WITHOUT THE WRITTEN PERMISSION OF KENDALL HOWARD IS STRICTLY PROHIBITED.

MANUFACTURING COMMENTS:

UNLESS OTHERWISE SPECIFIED, ALL DIMENSIONS ARE IN INCHES.
TOLERANCES:
FRACTIONAL: ±1/8
ANGULAR: ±1°
TWO PLACE DECIMAL: ±.03
THREE PLACE DECIMAL: ±.010
HOLE: ±.005

MATERIAL: NA
SURFACE AREA (in²): NA
FINISH ID: NA
FINISH DESCRIPTION: NA

DO NOT SCALE DRAWING

APPROVAL		DATE
DRAWN	BS	09/28/2021
DESIGN	BS	09/28/2021
ENG APPR		
MFG APPR		

LEGACY Part Number:

CLASSIFICATION:
Technical Furniture

THIRD ANGLE PROJECTION

INTERPRET DIMENSIONS AND TOLERANCES PER ASME Y14.5-2009

KENDALL HOWARD

TITLE:
PRODUCT DATA- 36" PERFORMANCE PLUS ACCESSORY BAR KIT

SIZE	DWG. NO.	REV
A	7000-3-536-00 Product Data	A

SCALE: 1:24 WEIGHT (lbs): 4.08 SHEET 1 OF 1

N/A	Initial Release	BS	09/28/2021	-
ECO No:	Description:	By:	Date:	App By: