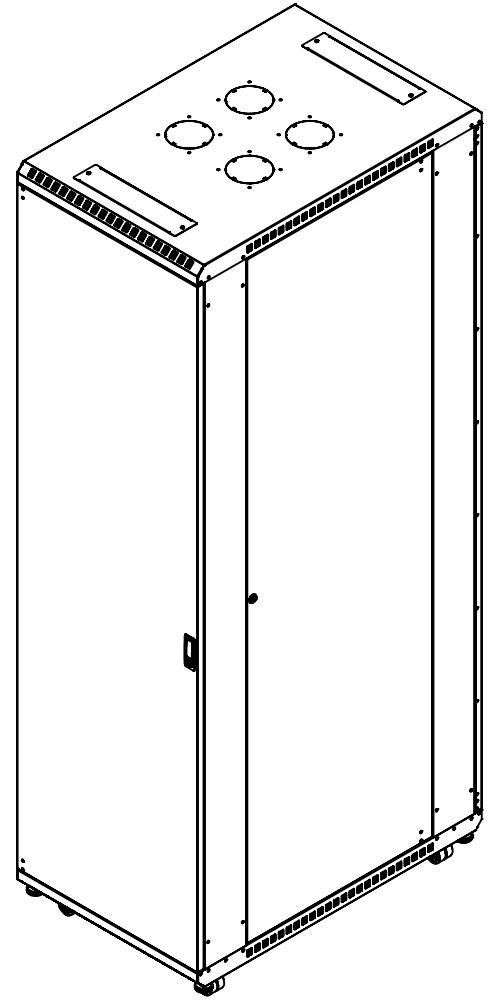


ITEM NO.	PART NUMBER	DESCRIPTION	QTY.
1	K102937	COMMON FRAME- 45U LINIER 36 INCH DEEP	1
2	K102935	SIDE DOOR ASSEMBLY - 45U LINIER 36 INCH DEEP	2
3	cp-1195	LOCK- 7/8" BARREL	2
4	cp-1197	CAM, LOCK- .575 X .913	2
5	K102932	SOLID DOOR ASSY- 45U LINIER FS	1
6	K102942	VENTED DOOR ASSY- 45U LINIER FS	1
7	cp-1020	HANDLE, COMPRESSION- LOCKING	2
8	cp-1024	BEARING, HINGE- PLASTIC	12



D

D

C

C

B

B

A

A

<p>KENDALL HOWARD CONFIDENTIAL THE INFORMATION CONTAINED IN THIS DRAWING IS THE SOLE PROPERTY OF KENDALL HOWARD. ANY REPRODUCTION IN PART OR AS A WHOLE WITHOUT THE WRITTEN PERMISSION OF KENDALL HOWARD IS STRICTLY PROHIBITED.</p>		<p>UNLESS OTHERWISE SPECIFIED, ALL DIMENSIONS ARE IN INCHES.</p>		<p>APPROVAL</p>		<p>DATE</p>		<p>KENDALL HOWARD</p>			
		<p>TOLERANCES: FRACTIONAL: ±1/8 ANGULAR: ±1° TWO PLACE DECIMAL: ±.03 THREE PLACE DECIMAL: ±.010 HOLE: ±.005</p>		<p>DRAWN BS 11/14/2023 DESIGN BS 11/16/2023 ENG APPR MFG APPR</p>		<p>TITLE: 45U LN FS- SOLID DOOR / VENTED DOOR- 36 INCH DEEP</p>					
<p>MANUFACTURING COMMENTS:</p>		<p>MATERIAL: SEE BOM</p>		<p>LEGACY Part Number:</p>		<p>SIZE</p>		<p>DWG. NO.</p>		<p>REV</p>	
<p>SURFACE AREA (in²): NA</p>		<p>FINISH ID: NA</p>		<p>CLASSIFICATION:</p>		<p>A</p>		<p>3106-3-001-45</p>		<p>A</p>	
<p>FINISH DESCRIPTION: NA</p>		<p>DO NOT SCALE DRAWING</p>		<p>THIRD ANGLE PROJECTION</p>		<p>INTERPRET DIMENSIONS AND TOLERANCES PER ASME Y14.5-2009</p>		<p>SCALE: 1:4</p>		<p>WEIGHT (lbs): 194.87</p>	
<p>198 Initial Release BS 11/16/2023 BS</p>		<p>ECO No:</p>		<p>Description:</p>		<p>By:</p>		<p>Date:</p>		<p>App By:</p>	

5

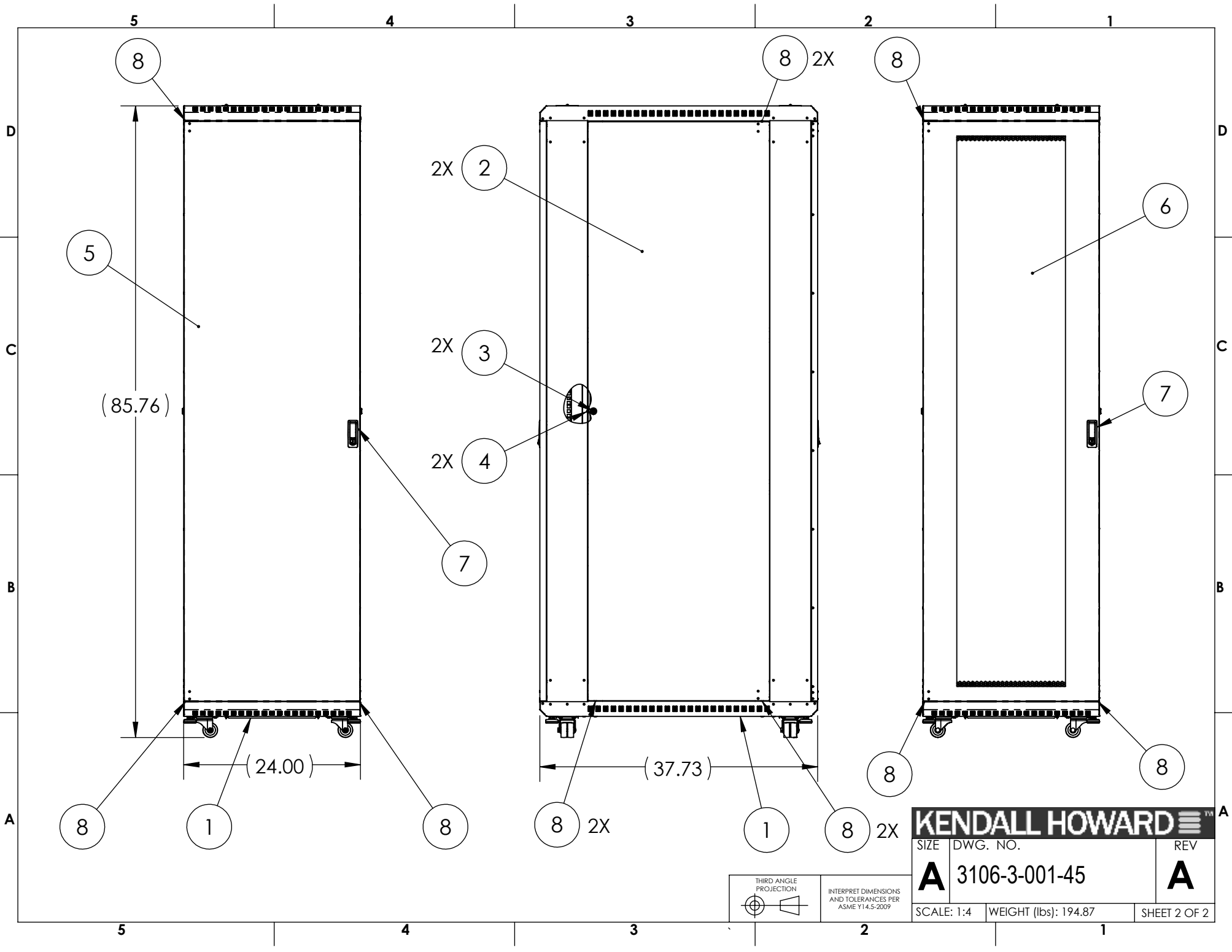
4

3

2

1

SHEET 1 OF 2



KENDALL HOWARD 

SIZE	DWG. NO.	REV
A	3106-3-001-45	A
SCALE: 1:4	WEIGHT (lbs): 194.87	SHEET 2 OF 2

